



INDIAN SCHOOL AL WADI AL KABIR

DEPARTMENT OF EVS [2023 – 2024]

LESSON: **PLANTS AND ANIMALS IN WATER**

WORKSHEET 2

RESOURCE PERSON: Mrs. Soumya L S Nair

NAME: _____ CLASS: V SEC: _____ DATE: _____

I. Fill in the blanks by completing the sentences.

1. Fish that travel in groups near coral reefs are _____ fish.
2. Animals that live on trees or its branches are called _____.
3. A fish that climb trees by means of its spiny gill cover and gills _____.
4. Unwanted plants growing in an area are called _____.

II. Establish the relationship and complete the following.

1. hydrilla : _____ :: whales : aquatic mammal
2. toad : webbed feet :: turtles : _____
3. fish : gills :: dolphins : _____

III. Circle the odd ones in each group.

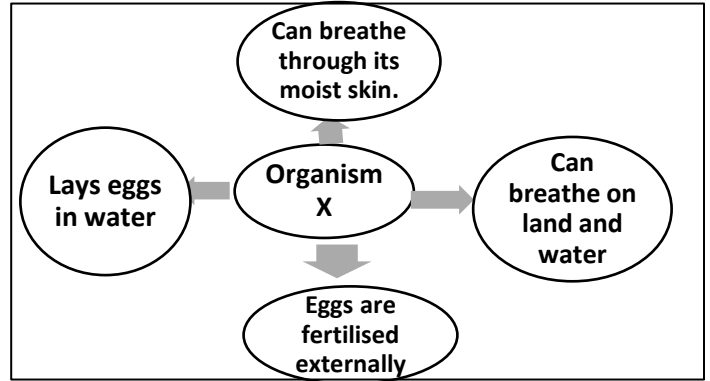
1. wolffia pistia fern water hyacinth
2. whale dolphin fish seal

IV. Complete the flow chart.

AQUATIC PLANT	TYPES	ADAPTATIONS
1. Water hyacinth		<ul style="list-style-type: none">• Spongy stem with air spaces• Root not fixed to soil
2. Lotus		
3.	Submerged aquatic plants	<ul style="list-style-type: none">• These plants have thin, small and ribbon shaped leaves

V Study the concept map and identify the organism marked 'X'.

- a. turtle
- b. frog
- c. fish
- d. dolphins



V. Observe the given picture and provide responses to the questions that follow.

1. a. Name the plant by observing the leaves. _____

b. The leaves of this plant don't shrivel even though they remain in water for a very long time. What makes them waterproof?



2. You find that a fish has been washed to shore. It is struggling to get back in the water. What will you do and why?



3. a. Identify the plant shown in the picture given alongside.

_____.

b. These are unwanted plants growing in a water body. State the term that refers to such unwanted plants - _____

c. Why do we need to control the growth of these plants?



